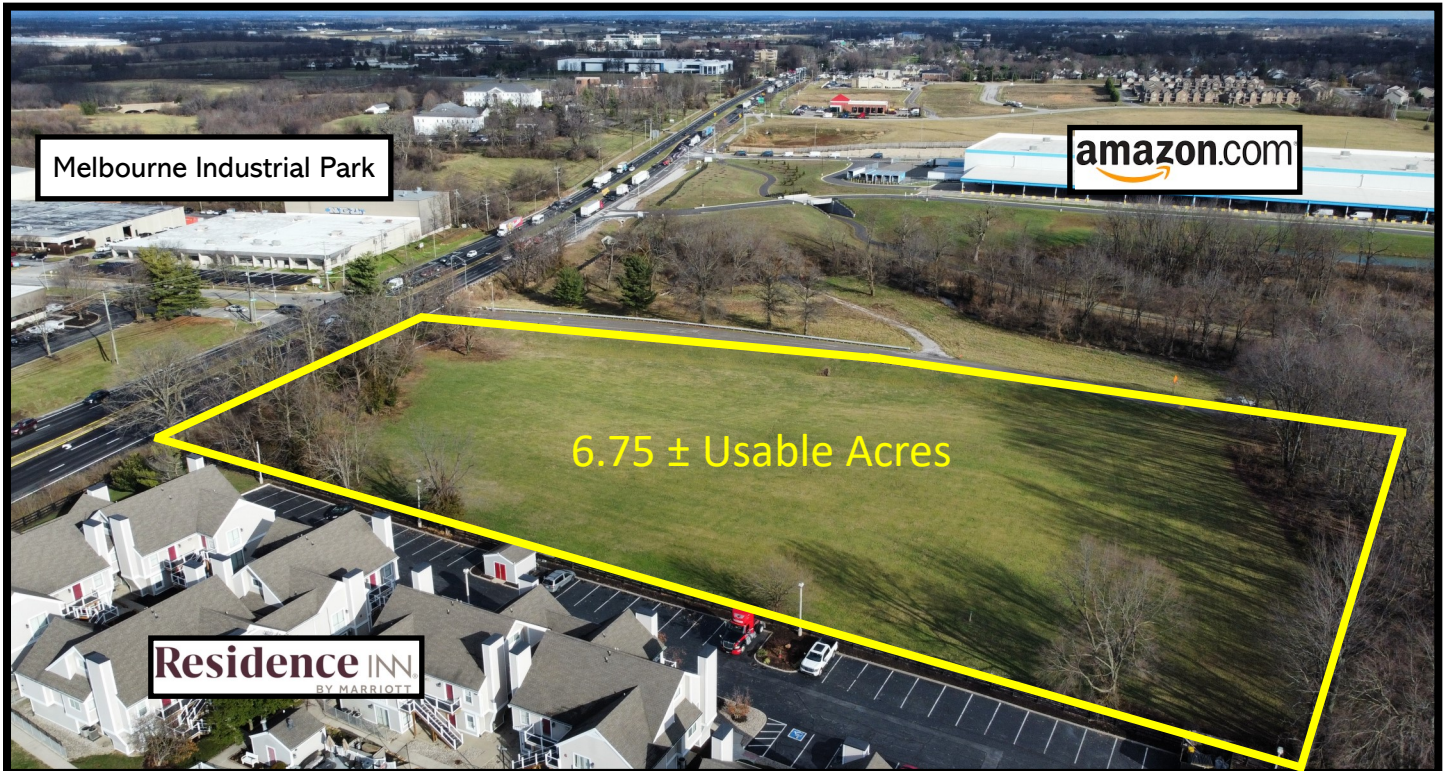


# IDEAL BUSINESS SITE FOR SALE

## Newtown Pike

Lexington, KY

### LAND FOR SALE - FIRST TIME ON MARKET



*Part of Original Lexmark Campus Fronting on Newtown Pike*

*Ideal business site on soon to be widened Newtown Pike.*

*Well located just 0.3 miles from New Circle Road and 1.5 miles from I-64/I-75.*

*Adjacent to new Amazon last mile facility. Zoned A-U.*

Area is home to Lexmark corporate headquarters, Amazon, Fayette County Public Schools Central Office, TQL, Kendryl, Conduent, new regional headquarters of Kinetic by Windstream, Covetrus, plus apartments at Coldstream Reach Park. Also, recently constructed Sumitomo regional facility, Southeast Freight Lines and LBX Customer Experience Center. Short distance via Citation Blvd. to 2 recently announced shopping centers and hundreds of newly constructed homes.

**\$1,687,500**

For More Information Contact:

**Andy Haymaker**

859-685-3034 Office; 859-621-6178 Cell

ahaymaker@haymakercompany.com



**HAYMAKER**

commercial real estate



# IDEAL BUSINESS SITE FOR SALE

## Newtown Pike

Lexington, KY

